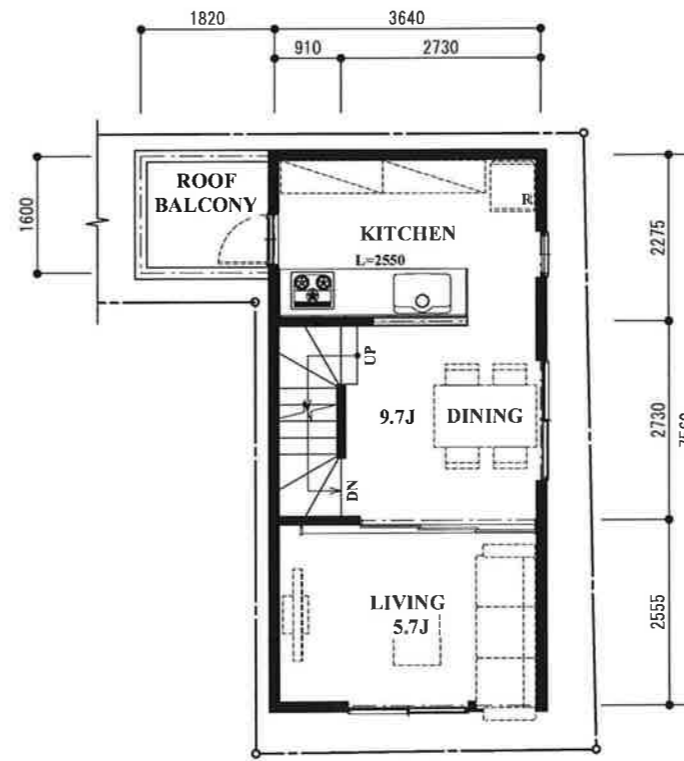
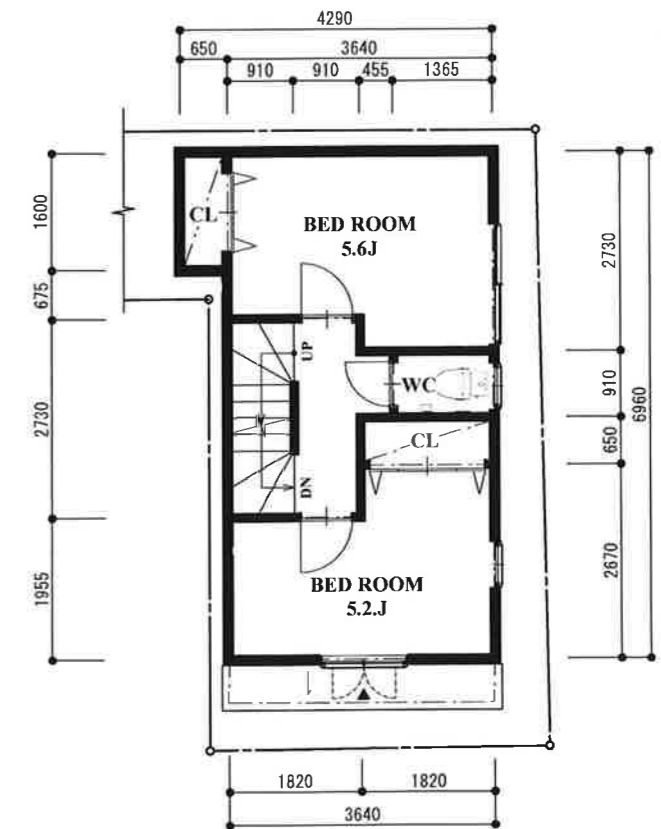


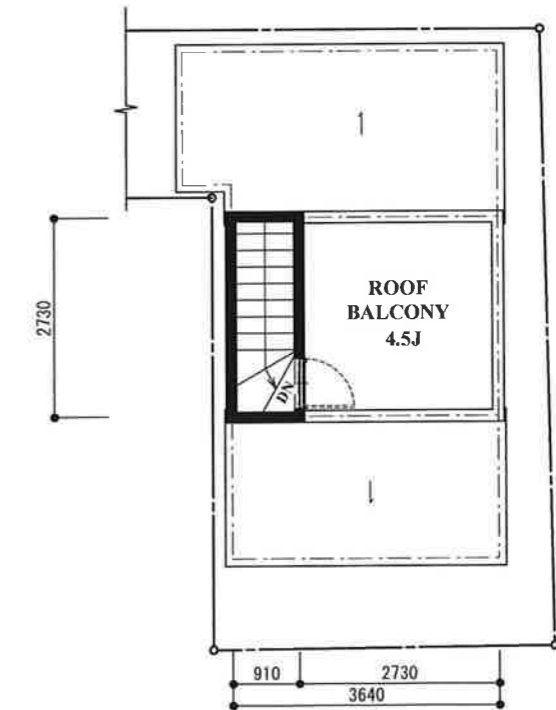
FIRST FLOOR PLAN



SECOND FLOOR PLAN



THIRD FLOOR PLAN



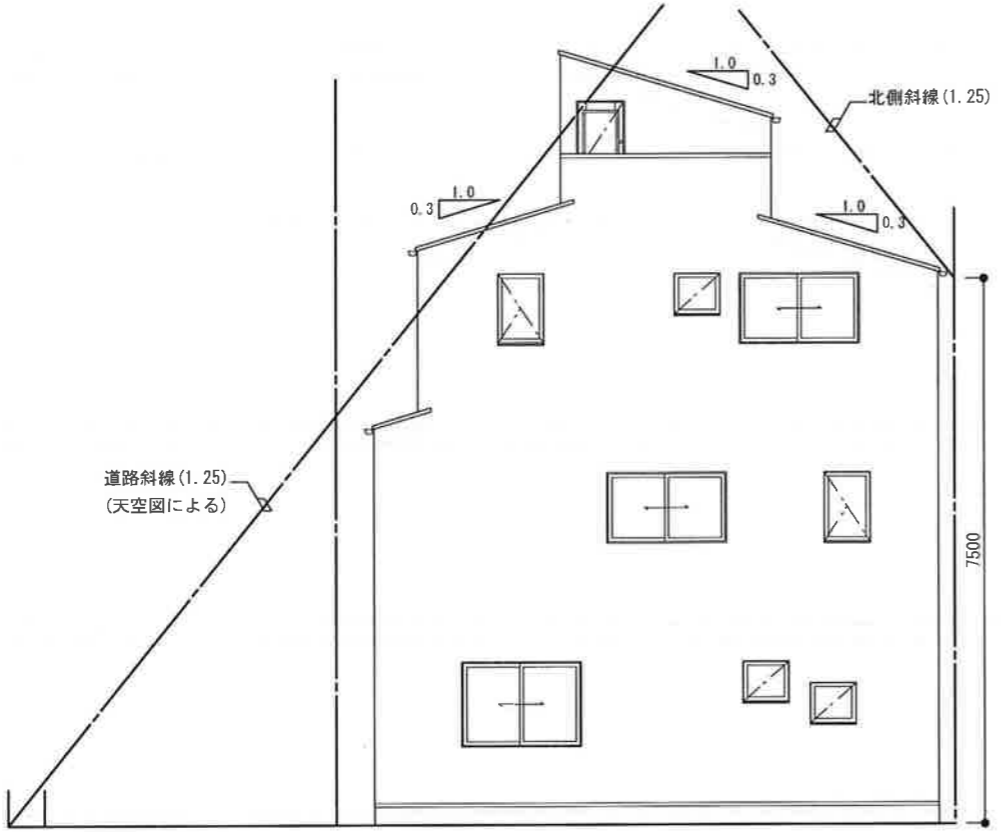
PH FLOOR PLAN

敷地面積 : 57.56 m²
 建築面積 : 30.43 m² 52.87% < 60.0%
 容積対象面積 : 86.80 m² 150.80% < 180.0%

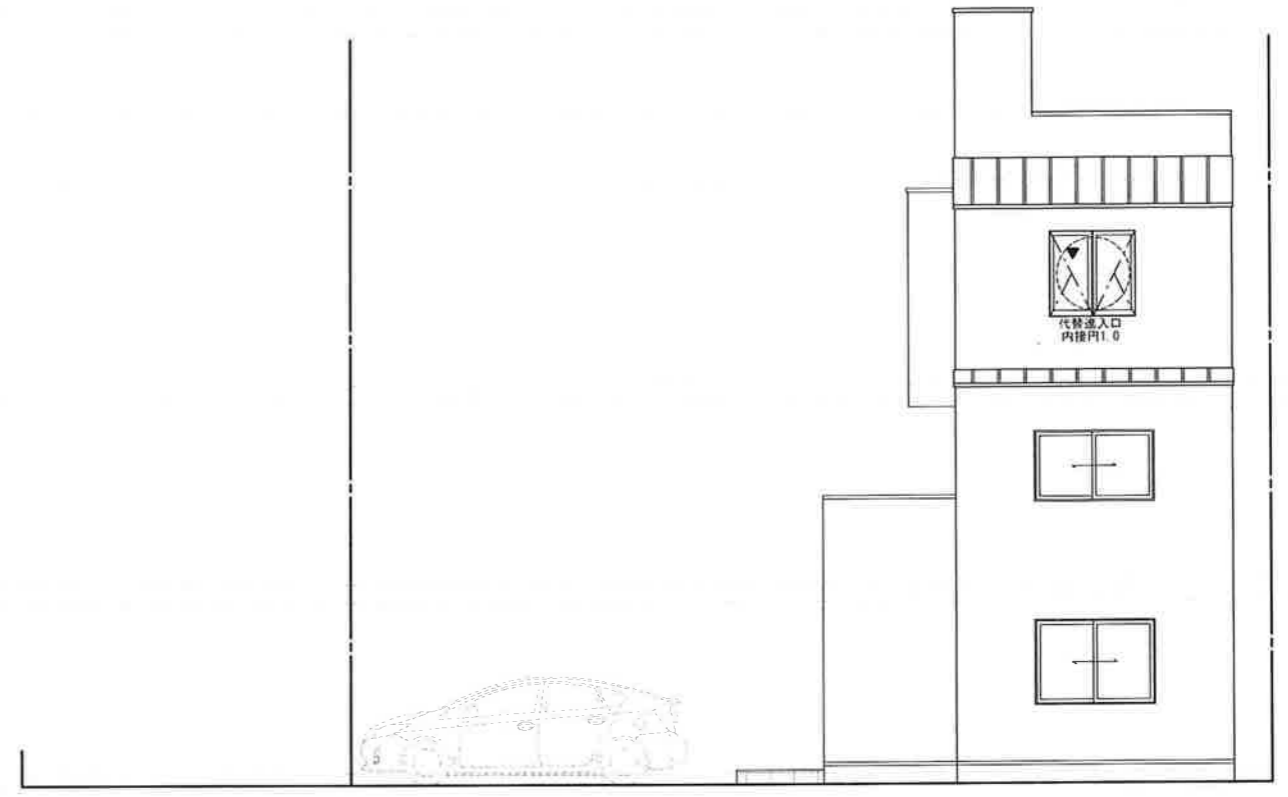
1F AREA : 30.43m²
 2F AREA : 27.52m²
 3F AREA : 26.37m²
 PHF AREA : 2.48m²
 TOTAL : 86.80m² (26.2坪)



▽PH高さ
▽PH軒高
▽最高高さ
▽最高軒高
▽3PL
▽2PL
▽1PL
▽設計GL

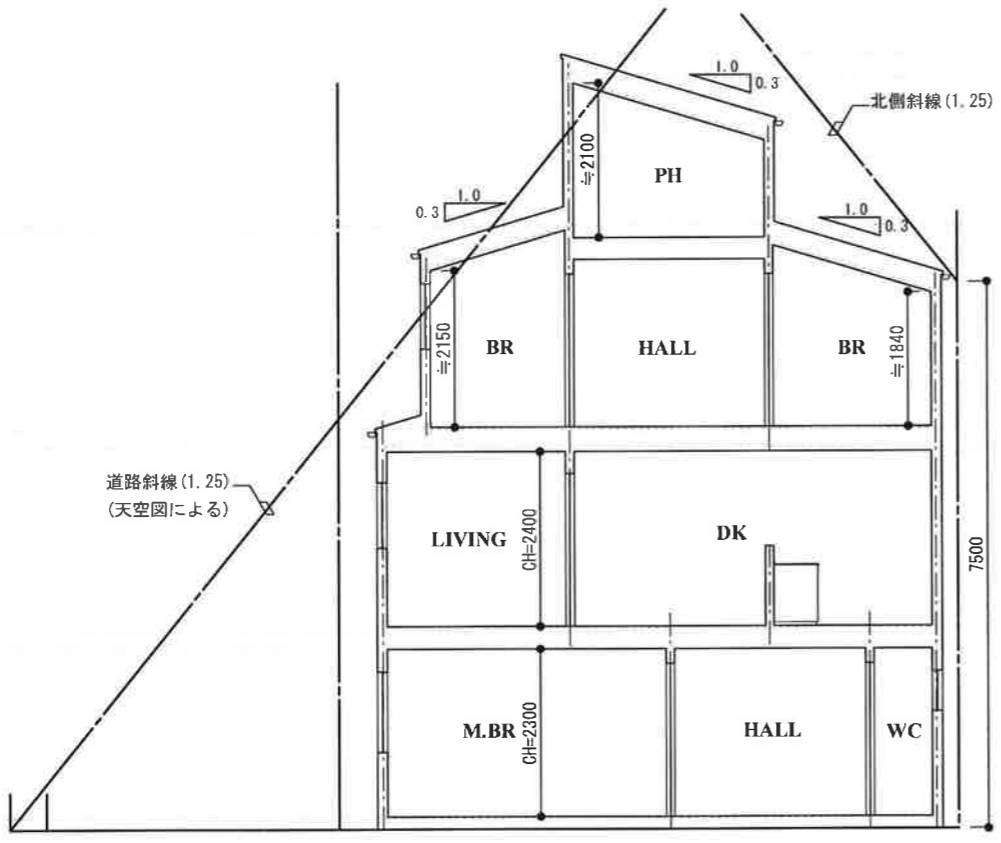


EAST ELEVATION

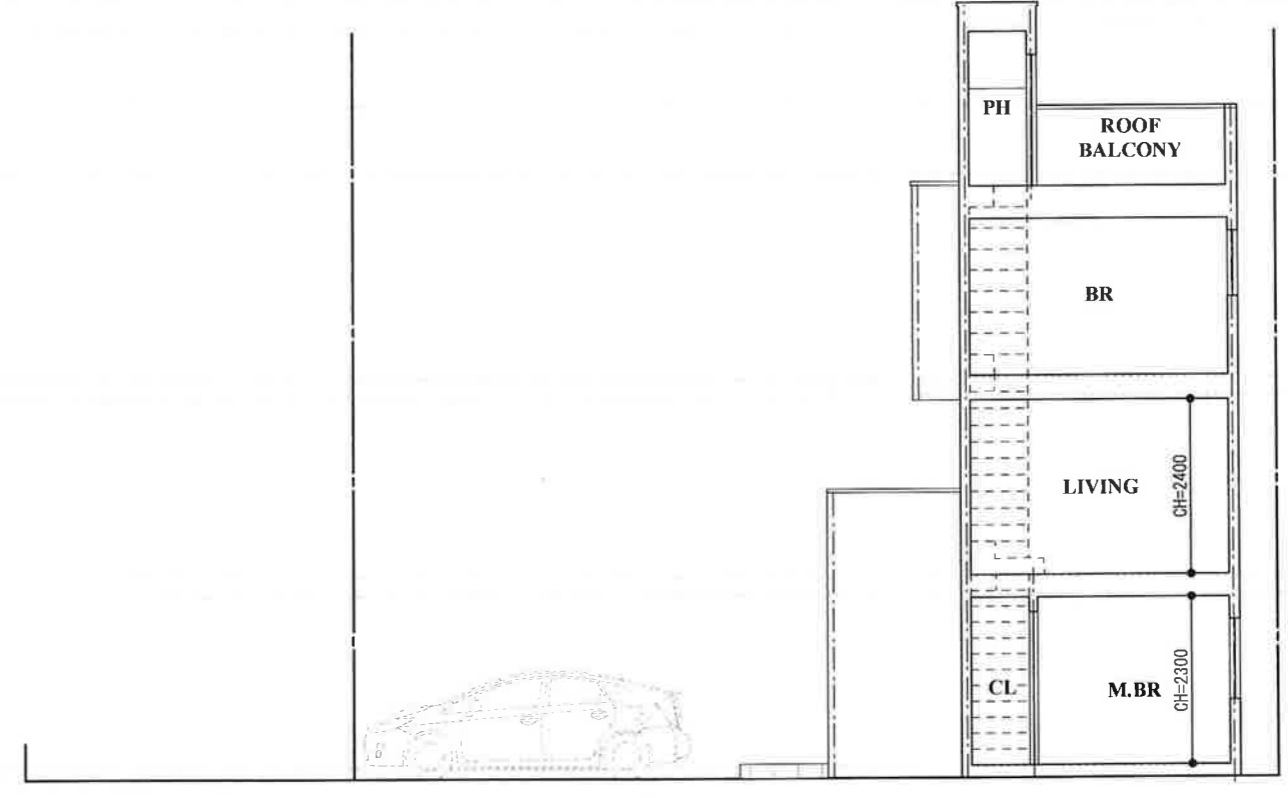


SOUTH ELEVATION

▽PH高さ
▽PH軒高
▽最高高さ
▽最高軒高
▽3PL
▽2PL
▽1PL
▽設計GL



S-N SECTION



E-W SECTION